



Renfrewshire Council Children's Services - Secondary

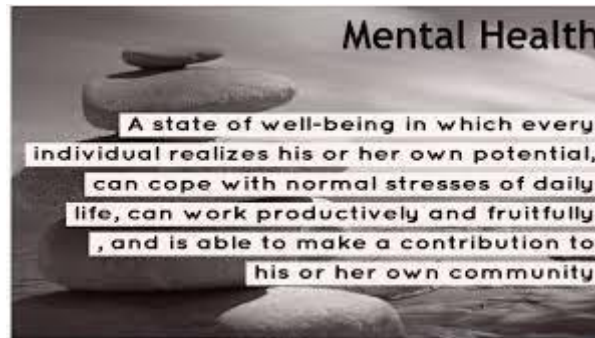
Mental Health and Wellbeing Policy for Educational Establishments

St Benedict's High School

Rationale

This policy is in response to the [Scottish Government's Mental Health Strategy 2017-27](#). The policy will focus on:

- **Our policy statement**
- **Lead members of staff**
- **Universal Support**
- **Signposting**
- **Working with parents/carers**
- **Targeted Support**
- **Training**
- **Policy Review**
- **Links**



Policy Statement

At **St Benedict's High School**, we aim to **promote positive mental health and wellbeing for every member of our staff and children/young people through nurturing relationships and the promotion of a positive establishment ethos..** We will pursue this aim using both universal, whole establishment approaches and specialised targeted approaches aimed at vulnerable children/young people.

In addition to promoting positive mental health and wellbeing, we aim to **recognise and respond** to mental ill health. By developing and implementing a practical, relevant and effective mental health and wellbeing framework, our policies and procedures will promote a safe and stable environment for the many children and young people affected both directly, and indirectly by mental ill health.

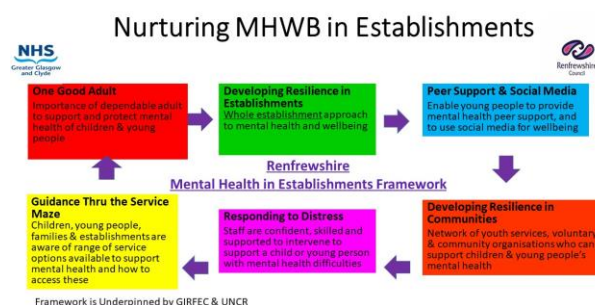
This policy is linked to the United Nations Convention on the Rights of the Child (UNCRC) articles 3, 12, 13, 17, 24 and 29.



This document describes **St Benedict's** approach to promoting positive mental health and wellbeing. This policy is intended to provide a framework for effective mental health and wellbeing

in our establishment through the **NHSGGC Mental Health Improvement & Early Intervention Framework for Children and Young People (6 Box Framework)** and should be used as whole establishment guidance for all staff. The 6 box Framework is an evidence-based approach which sits under **GIRFEC** and the **UNCRC (UN Convention of the Rights of the Child)**.

This policy will provide you with information around our universal and targeted approaches to mental health and wellbeing and also direct you to relevant training opportunities available online and through Renfrewshire Council, other partners and the new [Scottish Government Children and Young People's Mental Health Learning Resource](#) in order for you to meet our baseline skills requirement. We will also use our monthly newsletter, blog and Twitter to share information of upcoming training.



The Policy and 6 Box Framework will:

- **Provide a toolkit for all staff supporting children and young people** in establishments to identify good practice and areas for development
- **Promote positive mental health and wellbeing in all children, young people and staff** through prevention and early intervention
- **Increase understanding and awareness** of common mental health issues
- **Alert staff to early warning signs of mental distress and ill health**
- **Provide support to staff working with children/young people with mental health issues** through a model of training to enhance professional knowledge
- **Provide support to children/young people experiencing mental ill health, their peers and parents/carers** through effective universal supports, effective liaison with partners and appropriate signposting to supports within establishments and the community.

For examples of good practice within each box, see [Appendix E](#).

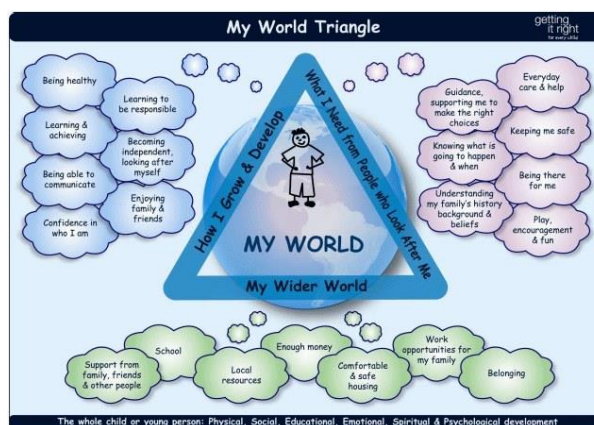


Lead Members of Staff

Whilst **all** staff have a responsibility to promote the mental health of children and young people, staff with a specific, relevant remit include:

- **Child Protection Officer – A Taylor**
- **CLPL Lead – A Phelps**
- **Head of Health & Wellbeing – K Dewar**
- **Mental Health Lead & MH First Aider – Pastoral Care G Harvey**
- **First Aider Lead – L Brown**
- **ASIST (Applied Suicide Intervention Skills Training) trained staff**
– **Pastoral Care V Sutherland**

*You can edit this section as appropriate.





Universal Support

We aim to look after the mental health and wellbeing of all of our children/young people by:

- **Promoting nurturing relationships and health and wellbeing as the responsibility of all** within our own establishment and the wider community through [Renfrewshire's Nurturing Relationships Approach \(RNRA\)](#) (one good adult and developing resilience in the community)
- Ensuring that children/young people **learn how to look after their mental health and wellbeing** (developing resilience in our establishment/community)
- Ensuring that children/young people know and can **recognise mental health conditions** (developing resilience in our establishment/community)

- Ensuring that children/young people **understand and know where to go if they require more targeted support** (one good adult/peer support and social media/responding to distress/guiding thru the service maze)
- Using the wellbeing indicators to **track wellbeing and as a basis for discussion with a key adult** using the **Glasgow Motivation and Wellbeing Profiling Tool** (one good adult/developing resilience in the community)



All Renfrewshire establishment staff working with children/young people will access the annual update of [Understanding the Mental Health of Children and Young People in Renfrewshire](#) and Child Protection to enable them to keep pupils in their care safe.

Our counselling service, **The-Exchange**, is a universal service and is available to all of our pupils. This will complement the range of whole-school and targeted approaches already available in schools to help support the mental, emotional, social and physical wellbeing of children and young people. Access to this resource is by self-referral on [The-Exchange website](#), or through Pupil Support.



Teaching About Mental Health

Our aim is to enable children/young people to develop the skills, knowledge, understanding, language and confidence to seek help, as needed, for themselves or others. We offer universal supports in a variety of ways; as part of our **Personal and Social Education programme, accredited courses, pupil leadership opportunities, wider achievement and extra-curricular opportunities.**

Headstrong is delivered to **S3** as part of our Personal and Social Education programme. It is a **cognitive behaviour therapy** evidence-based programme which has been implemented by all Renfrewshire secondary schools.

We also offer the SQA Mental Health Award to pupils in **S4** in order to support the accreditation journey of our pupils. The award aims to:

- Reduce stigma surrounding mental health

- Arm young people with healthy coping strategies
- Promote knowledge of the impact of mental health on behaviour
- Dispel myths surrounding mental health
- Promote understanding of positive and negative impacts on mental health
- Help individuals to make the right choices
- Promote understanding of the potential uses and impact of social media and the internet
- Create resilience



Other universal opportunities for pupils around mental health e.g. MVP, Mental Health Ambassadors, Mental Health drop in Thursday and Exchange Counselling drop in on a Wednesday and Friday.

Targeted Support

When it is identified that a child/young person requires a more targeted support tailored to their individual needs, the Pupil Support team will **work in partnership with the child/young person, their parents/carers, staff within the establishment and any other relevant partners**. It may be that information regarding their support needs are shared with staff if the needs of the child/young person are impacting on their learning.

If you have any concerns regarding the wellbeing of a child/young person that you feel require more specialised or targeted support, you should speak to the relevant member of the Pupil Support team. You can find out more about warning signs, managing disclosures, protocol and confidentiality by clicking [here](#).

If the wellbeing concern you have is in relation to **self-harm and suicide**, you can find out more about supporting children/young people at risk by clicking [here](#). This link will take you to **Renfrewshire Council's Supporting Children and Young People at Risk of Self-Harm and Suicide**.



Signposting

We will ensure that children/young people, staff and parents/carers are aware of sources of support within our establishment and in the local community, who it is aimed at and how to access it. This will be done by sharing digital resources on our website and other digital platforms twitter [@stbenedictsren](#) and Satchel 1. Our digital resources include signposting for [children/young people](#), [parents/carers](#) and [staff](#). (See Appendices F, G and H)

We will display relevant sources of support in communal areas and will regularly highlight sources of support to young people within relevant parts of the curriculum.



Working in Partnership with Parents/Carers

Parents/Carers are often very welcoming of support and information from the establishment about supporting their child/young person's emotional and mental health. To support parents/carers, we will:

- Highlight sources of information and support about common mental health issues on our establishment website and other social media platforms
- Ensure that all parents are aware of who to talk to if they have concerns about their child or a friend of their child/young person
- Make our 'Mental Health Policy' easily accessible to parents/carers

- Share ideas about how parents/carers can support positive mental health in their children through our regular information events
- Keep parents/carers informed about the mental health topics their children/young people are learning about in HWB/PSE lessons and share ideas for extending and exploring this learning at home.



Staff Skills and Professional Learning

Renfrewshire's Nurturing Relationships Approach delivers a universal approach to supporting mental health and wellbeing and promoting resilience and as health and wellbeing is the responsibility of **all** staff, we must ensure that we all have an awareness of the warning signs to look for and also how to manage disclosures safely. For more information around this, see [Appendix A](#).

Renfrewshire Council have provided suggestions for **baseline training for all staff with specific training for staff interested or involved with pupil support**. This document is listed as [Appendix I](#).

Suggestions for individual, group or whole school **Career Long Professional Learning (CLPL)** should be discussed with **Dr Phelps**, our CLPL Coordinator who can also highlight sources of relevant training and support for individuals as needed.





Policy Review

This policy will be reviewed every 3 years as a minimum. It is next due for review in **2025**

Additionally, this policy will be reviewed and updated as appropriate on an ad hoc basis. If you have a question or suggestion about improving this policy, please contact **Mr Taylor - Head Teacher**.

This policy will always be immediately updated to reflect personnel changes.

Appendices

- A - [Warning signs and managing disclosures](#)
- B - [Further information and sources of support about common mental health issues](#)
- C - [Guidance and advice documents](#)
- D - [Talking to students when they make a mental health disclosure](#)
- E - [Renfrewshire Mental Health and Wellbeing Policy - self-evaluation tool and examples of good practice](#)
- F - [Mental Health and Wellbeing Signposts for Children and Young People](#)
- G - [Mental Health and Wellbeing Signposts for Parents/Carers](#)
- H - [Mental Health and Wellbeing Signposts for Staff](#)
- I - [Mental Health and Wellbeing Training for Staff](#) (this includes links to the Scottish Government's new Professional Learning Resource)
- J- [Supporting Children & Young People at Risk of Self Harm and Suicide - Guidance for Staff](#)